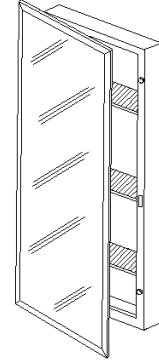
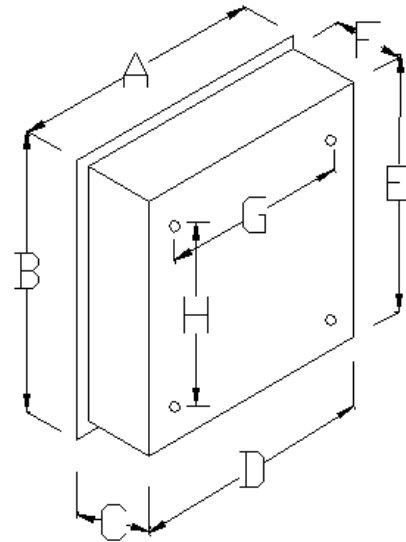


STYLELINE—STAINLESS SURFACE MOUNTED MEDICINE CABINET



FEATURES/TYPICAL SPECIFICATIONS

- Surface mount installation
- 430 Stainless steel construction
- Formed & welded body with #4 satin finish
- Float glass mirror 3/16" thick
- Polished stainless steel mirror frame
- Full stainless steel piano hinge
- Magnetic door closer
- 3 Adjustable stainless steel shelves
- Reversible for left-hand or right-hand door opening
- Includes mounting hardware



MODEL NO.	OVERALL SIZE			BODY SIZE				
	A	B	C	D	E	F	G	H
230P26SS	16	26	5	15-1/2	25-1/2	4-1/2	20-1/2	11

All models and material specifications are subject to change or withdrawal without notice.

REFERENCE	QTY.	REMARKS	Project
			Location
			Architect
			Engineer
			Contractor
			Submitted by Date